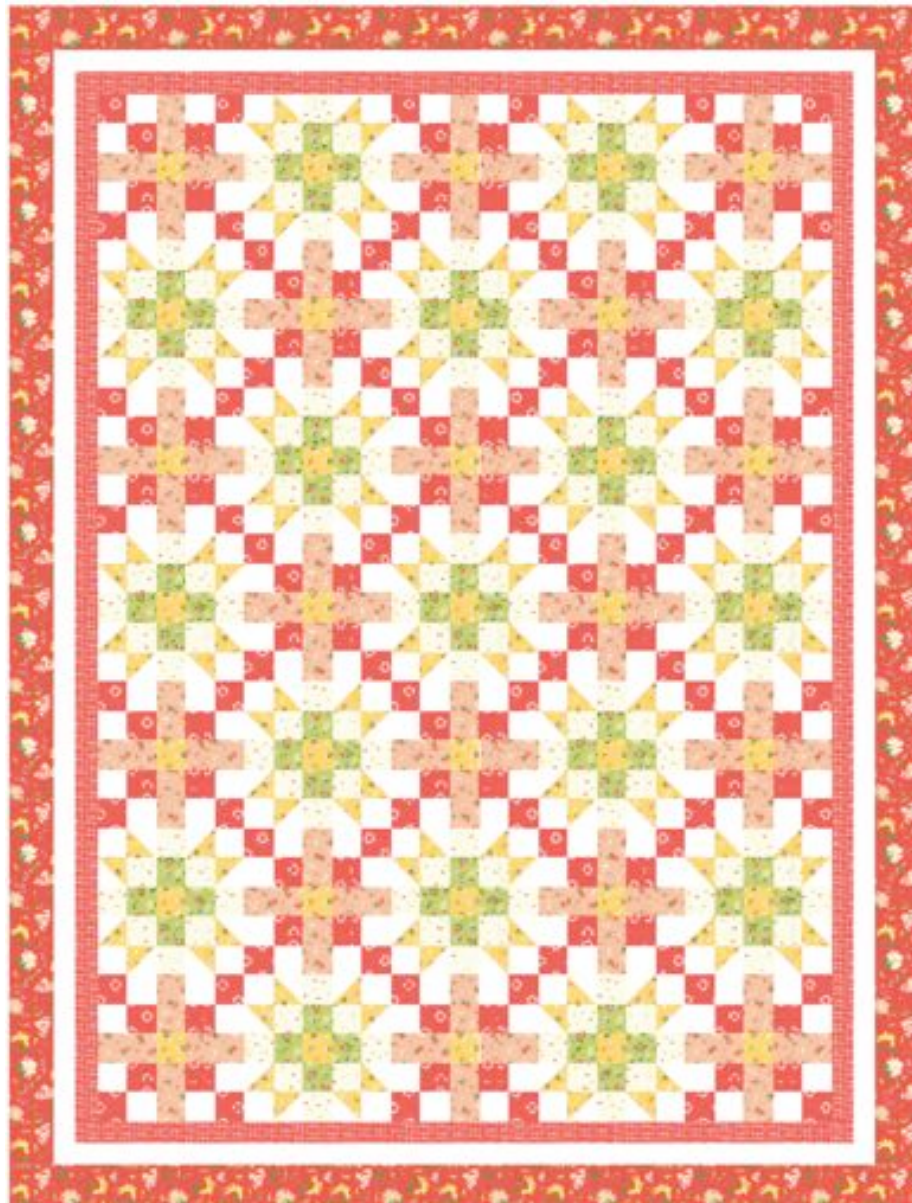


Fort Worth Fabric Studio Exclusive!

Le Chandelier

Finished Quilt Size: 62" x 82"



A Quilt Pattern by Jessica Dayon

Instagram: [@jessicadayon](#)

Blog: [jessicadayon.blogspot.com](#)

Shop: [jessicadayon.bigcartel.com](#)

and [jessicadayon.etsy.com](#)

BASIC INSTRUCTIONS

Read through the instructions before beginning

All seams are sewn with $\frac{1}{4}$ " seam allowance unless noted

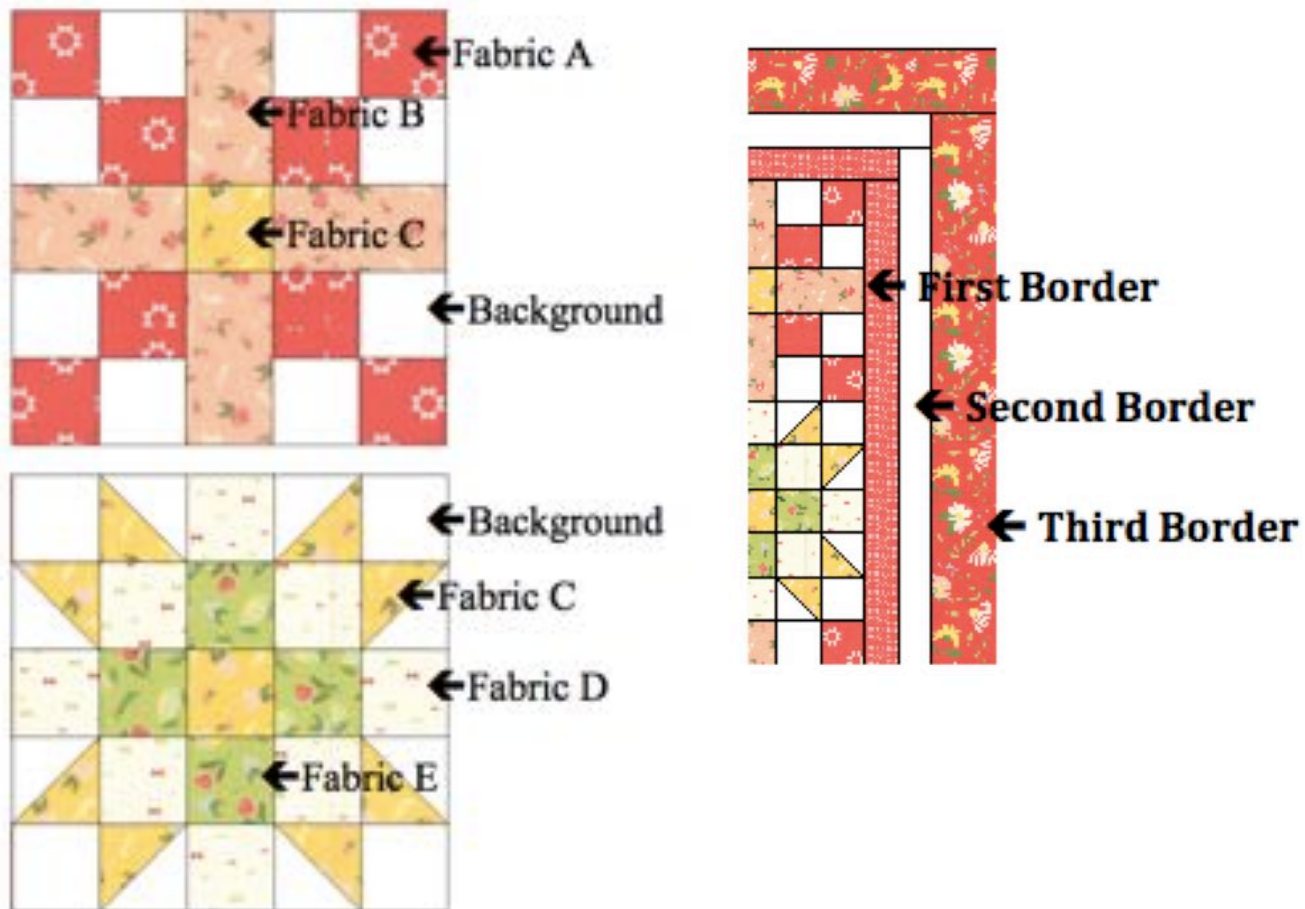
RST means right sides together

HST means half square triangles

Visit jessicadayon.blogspot.com and go to the Pattern Corrections tab to see if there have been any corrections made to this pattern.

COLOR SCHEME

The diagram below shows the placement of each color in the quilt block. This makes it easier to visualize where each fabric goes so you know and also in case you want to make color substitutions.



CUTTING

Fabric A (37553-17 Geranium Sunshine)-

-cut 9- $2\frac{1}{2}$ " by WOF strips; set aside for strip piecing

Fabric B (37552-15 Dreamy Peachy) -

-cut 5- $4\frac{1}{2}$ " by WOF strips; subcut into $2\frac{1}{2}$ " x $4\frac{1}{2}$ " rectangles (72 needed)

Fabric C (37550-16 Sunshine Meadow Blooms)-

-cut 3- 2½" by WOF strips; subcut into 2½" squares (35 needed)

-cut 5- 2⁷/₈" by WOF strips; subcut into 2⁷/₈" squares (68 needed)

Fabric D (37554-11 Fancy Ivory)-

-cut 9- 2½" by WOF strips; subcut into 2½" squares (136 needed)

Fabric E (37551-14 Leaf Green Flower Daze)-

-cut 5- 2½" by WOF strips; subcut into 2½" squares (68 needed)

Background (Bella Solids 9900-200)-

-cut 14- 2½" by WOF strips; set 9 strips aside (for strip piecing) and subcut the other 5 strips into 2½" squares (68 needed)

-cut 5- 2⁷/₈" by WOF strips; subcut into 2⁷/₈" squares (68 needed)

-cut 7- 2" by WOF strips; set aside for the Second Border

First Border (37555-20 Dottie Geranium)-

-cut 7- 2" by WOF strips; set aside for the First Border

Third Border (37550-14 Geranium Meadow Blooms)-

-cut 7- 3½" by WOF strips; set aside for the Third Border

BLOCK ASSEMBLY

BLOCK A

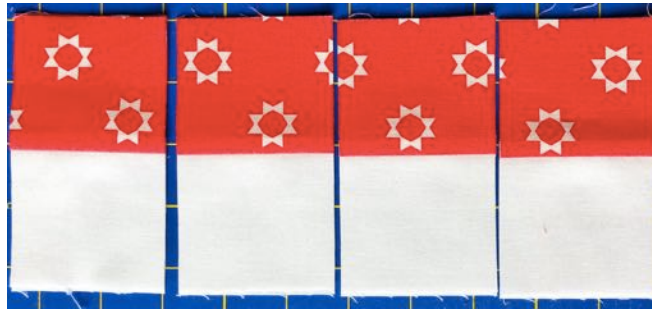
Gather the 9 strips of Fabric A and the 9- 2.5" background strips. Line a Fabric A strip up to a background strip and sew along the long edge.



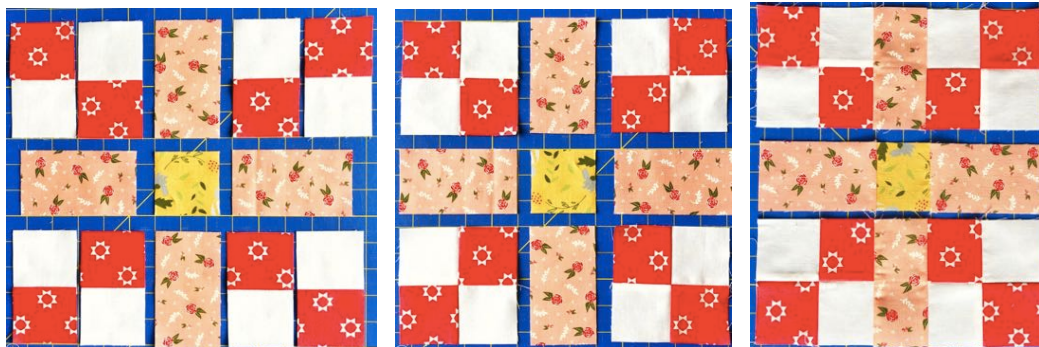
Press, with the seam allowance going toward the darker fabric. Repeat with the remaining 8 strips.



Cut each of the strip pieced units into 16- 2.5" x 4.5". For a total of 144- 2.5" x 4.5".



Gather the units you just made, the Fabric B rectangles, and 18 Fabric C squares. Lay the block out as shown below. Sew the 4 patches first. Sew the block together in rows.

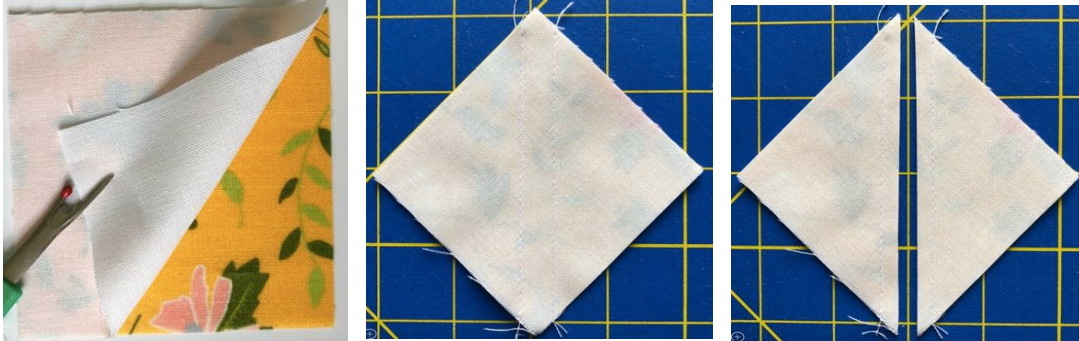


Sew the rows together. The unfinished block should measure 10.5". Repeat so that you have a total of 18 blocks.



BLOCK B

Make 2 at a time HST. Gather the $2\frac{7}{8}$ " background squares and $2\frac{7}{8}$ " Fabric C squares. Draw a diagonal line on the back of all of the Fabric C squares. Line up a background square and a Fabric C square, RST. Sew $\frac{1}{4}$ " away from the center line on both sides. Cut on the center line.



Press the units, pressing the seam allowance toward the darker fabric. Take care not to distort the fabric when pressing. Trim the dog-ears. Each HST should measure 2.5" by 2.5". Repeat this with the $2\frac{7}{8}$ " background squares and $2\frac{7}{8}$ " Fabric C squares until you have 136 HST total.



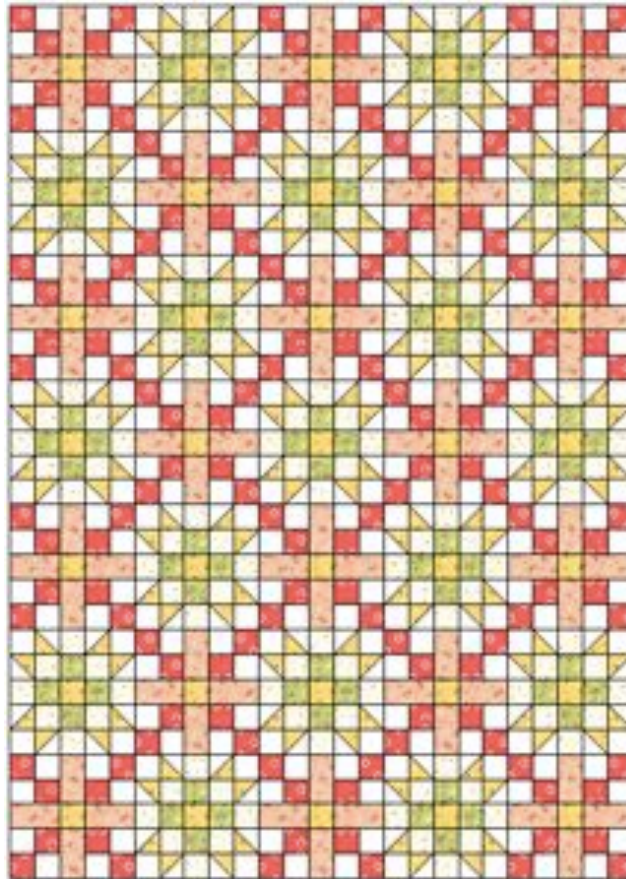
Gather the HST you just made, the Fabric C squares, the Fabric D squares, the Fabric E squares, and the 2.5" background squares. Lay the block out as shown below. Sew the block together in rows.



Sew the rows together. The unfinished block should measure 10.5". Repeat so that you have a total of 17 blocks.

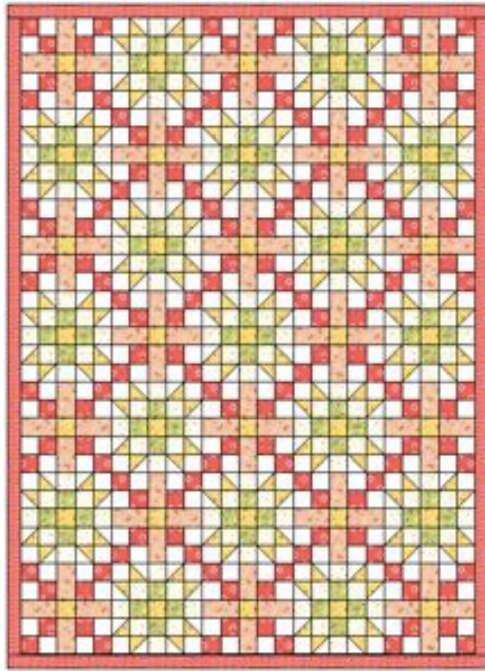
QUILT TOP ASSEMBLY

The layout is shown below. Sew 5 blocks to make a row, alternating Block A and Block B (as shown in the layout below). Press the seams of each row in opposite directions so that you can nest the seams when sewing the rows together. Sew 7 rows together to make the quilt top.



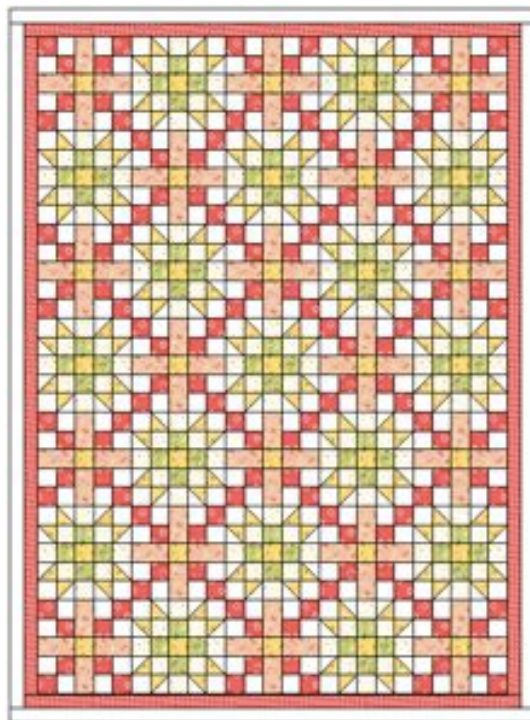
FIRST BORDER

Gather the first border fabric. Piece a 2" x WOF" piece to a 2" x 21" piece to yield a 2" x 64" piece. Repeat once more. These two pieces will be the top and bottom borders. Piece a 2" x WOF" piece to a 2" x WOF" piece to yield a 2" x 86" piece. Repeat once more. These two pieces will be the left and right borders. Sew the left and right borders on first. Trim the border pieces to exactly fit the quilt. Sew the top and bottom and then trim the border pieces to exactly fit the quilt.



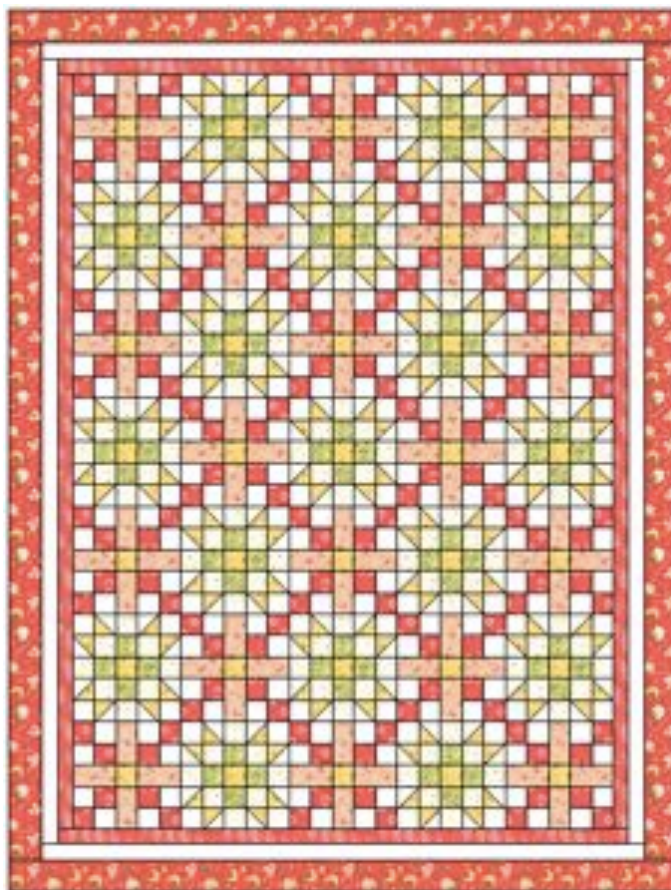
SECOND BORDER

Gather the second border fabric. Piece a 2" x WOF" piece to a 2" x 21" piece to yield a 2" x 64" piece. Repeat once more. These two pieces will be the top and bottom borders. Piece a 2" x WOF" piece to a 2" x WOF" piece to yield a 2" x 86" piece. Repeat once more. These two pieces will be the left and right borders. Sew the left and right borders on first. Trim the border pieces to exactly fit the quilt. Sew the top and bottom and then trim the border pieces to exactly fit the quilt.



THIRD BORDER

Gather the third border fabric. Piece a 3½” x WOF” piece to a 3½” x 21” piece to yield a 3½” x 64” piece. Repeat once more. These two pieces will be the top and bottom borders. Piece a 3½” x WOF” piece to a 3½” x WOF” piece to yield a 3½” x 86” piece. Repeat once more. These two pieces will be the left and right borders. Sew the left and right borders on first. Trim the border pieces to exactly fit the quilt. Sew the top and bottom and then trim the border pieces to exactly fit the quilt.



FINISHING THE QUILT

Baste, quilt, and bind the quilt using your preferred methods.

Note: For the binding, I cut $\frac{3}{4}$ yard of binding fabric into 9- 2.5” straight of grain cut binding.

Post your progress and finished quilt on Instagram, I'd love to see! Tag me @jessicadayon and use the hashtags- #lechandelierquilt #jessicadayonpatterns

To make the exact quilt as shown on the cover, you will need the following:

The fabric line used to make this quilt is Clover Hollow by Sherri & Chelsi for Moda Fabrics & Supplies. The specific SKUs used are listed below.

$\frac{3}{4}$ yard 37553-17 Geranium Sunshine (Fabric A)

$\frac{3}{4}$ yard 37552-15 Dreamy Peachy (Fabric B)

$\frac{3}{4}$ yard 37550-16 Sunshine Meadow Blooms (Fabric C)

$\frac{3}{4}$ yard 37554-11 Fancy Ivory (Fabric D)

$\frac{1}{2}$ yard 37551-14 Leaf Green Flower Daze (Fabric E)

$\frac{1}{2}$ yard 37555-20 Dottie Geranium (First Border)

$\frac{3}{4}$ yard 37550-14 Geranium Meadow Blooms (Third Border)

2 yards Bella Solids9900-200 Background

5 yards 37550-11 Ivory Meadow Blooms for Backing

$\frac{3}{4}$ yards 37553-17 Geranium Sunshine for Binding

Jessica Dayon Le Chandelier

Finished Quilt Size: 62" x 82"

Finished Block Size: 10"

MATERIALS NEEDED:

Fabric A: $\frac{3}{4}$ yard

Fabric B: $\frac{3}{4}$ yard

Fabric C: $\frac{3}{4}$ yard

Fabric D: $\frac{3}{4}$ yard

Fabric E: $\frac{1}{2}$ yard

First Border: $\frac{1}{2}$ yard

Third Border: $\frac{3}{4}$ yard

2 yards Background

Backing: 5 yards

Binding: $\frac{3}{4}$ yards

*The exact fabrics and requirements for making the cover quilt are inside.

©Jessica Dayon

Designed by: Jessica Dayon September 2018

Email: jessicadayon@gmail.com

Shop: jessicadayon.bigcartel.com

and www.jessicadayon.etsy.com

Blog: jessicadayon.blogspot.com

Instagram: [@jessicadayon](https://www.instagram.com/@jessicadayon)

PDF Pattern

All rights reserved. No part of pattern may
be reproduced in any form.
Jessica Dayon Copyright 2018