

Fort Worth Fabric Studio's Star Break Quilt



Finished size: 54.5" X 63.5" **Designed by Melanie Call exclusively for Fort Worth Fabric Studio**

Seam allowances are 1/4". WOF = Width of Fabric.

SUPPLIES:

Blocks - (1) Moda Layer Cake (42) 10" Squares

Background - 2/3 yard

Binding - 1/2 yard

Backing - 3.5 yards

Cutting Instructions:

Star Blocks:

Choose 6 layer Cake Squares (One 10" square will make one star)

Cut from each Star Layer Cake Square

B - (1) 3.5" X 3.5" square

C - (8) 2.5" X 2.5" squares - Draw diagonal line from corner to corner on wrong side.

Background fabric

Cut (5) strips 3.5" X WOF and sub-cut into 48 squares (A) 3.5" X 3.5"

Patchwork Blocks:

Use remaining 36 layer Cake Squares

Cut from each Patchwork Layer Cake Square

(4) 5" X 5" squares - total of (144) 5" X 5" squares

Binding:

Cut (6) strips 2.5" X WOF

**Block Assembly Instructions:
Star Block - 9.5" X 9.5"**

1. Place (1) C 2.5" square along bottom left corner of (1) A 3.5" square. Stitch along diagonal drawn line from corner to corner. Trim 1/4" away from sewn line. Fold over & iron. Block should measure 3.5" X 3.5". Make 4 blocks. (Fig. 1)

2. Place (1) C 2.5" square along bottom right corner. Stitch along diagonal drawn line from corner to corner. (Fig. 2) Trim 1/4" away from sewn line. Fold over & iron. Block should measure 3.5" X 3.5". Make 4 A/C blocks. (Fig. 3)

3. Sew together (1) A square to each side of A/C block. Row measures 3.5" X 9.5". Make 2 rows. (Fig. 4)

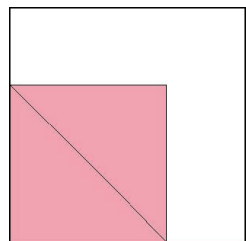


Fig. 1

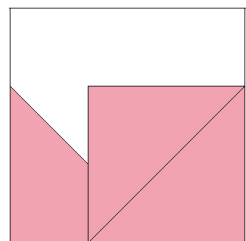


Fig. 2

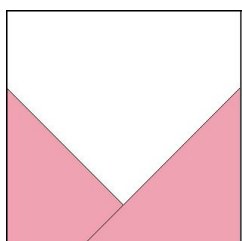


Fig. 3

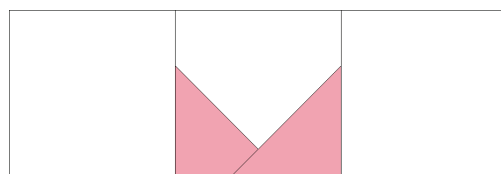


Fig. 4

4. Sew together (1) A/C block to each side of B square. Row measures 3.5" x 9.5". Make 1 row. (Fig 5)

5. Sew rows together to form Star Block. Block should measure 9.5" X 9.5. Note: these are No Point Matching Stars. (Fig. 6)

6. Repeat steps above to make a total of 6 Star Blocks.

Fig. 5

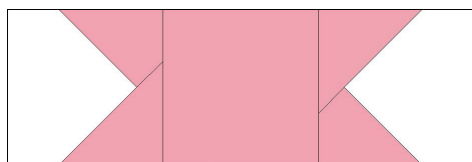
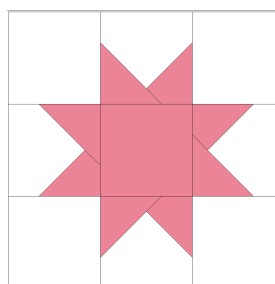


Fig. 6



Patchwork Blocks (four patch) - 9.5" X 9.5"

1. Sew (4) 5" X 5" squares together to make Patchwork Block (four patch). Repeat to make a total of (36) patchwork blocks. (Fig. 7)

Fig. 7



Quilt Assembly:

1. Sew 6 Patchwork Blocks together to make 1 row. Each row measures 9.5" X 54.5". Repeat until you have sewn 6 rows. Rotate blocks randomly into desired position. (Fig. 8)
2. Sew 6 Star Blocks together to make one row. Row measures 9.5" X 54.5" (Fig. 9)
3. Sew together all 7 rows to complete quilt top. (Fig. 10) Star Break Quilt finishes at 54" X 63.5".

Fig. 8

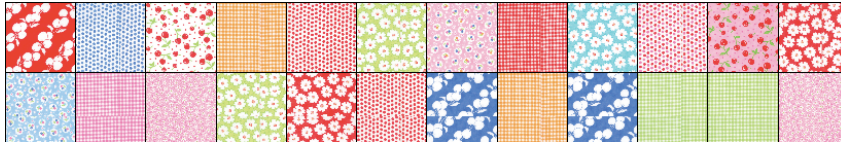
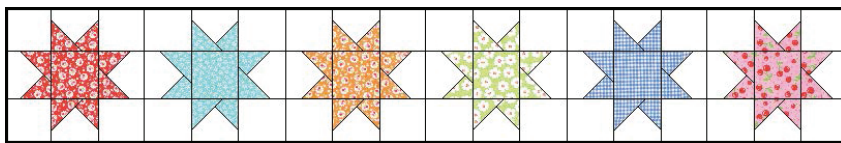
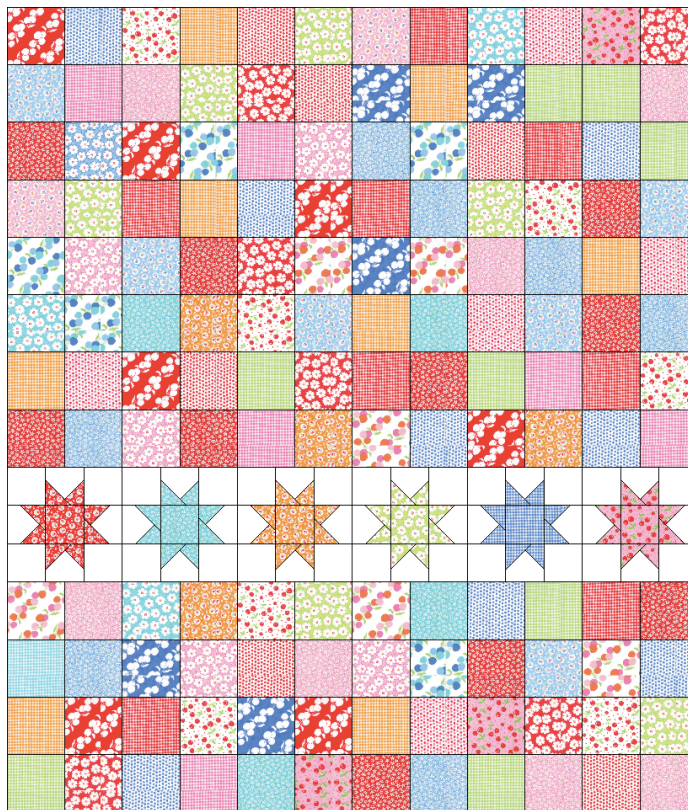


Fig. 9



Quilt Assembly:

Fig. 10



Quilt Finishing:

Baste, quilt and bind with preferred method.

#starbreakquilt #sewingwithfortworthfabricstudio

This free pattern is provided by Fort Worth Fabric Studio and is intended for home use only. Selling this pattern or using it as part of a kit for sale is prohibited.