

Poppy Tote with Zipper Pocket



Fort Worth Fabric Studio
Designed by: Lindsey Weight

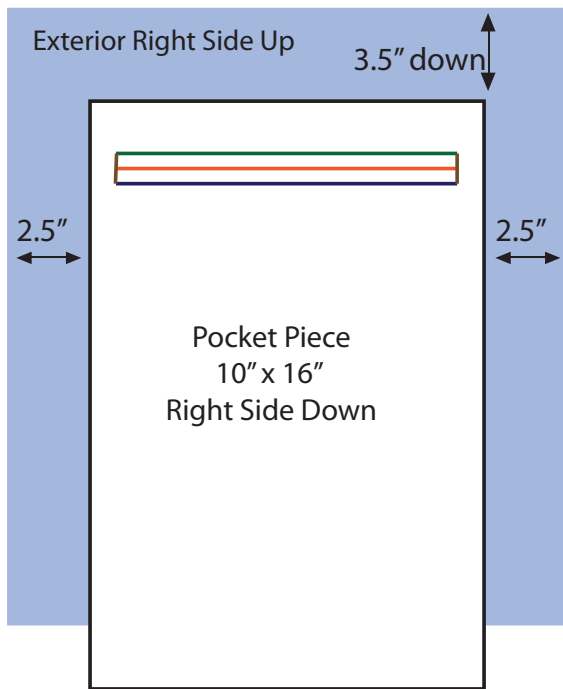
Finished size: 11" tall x 9" wide. 19.5" tall (including straps) 12" wide at the top of the bag.
Do not sell or distribute without owner's consent.

Tote Requirements:

1 yard of exterior fabric
1/2 yard lining fabric
10" x width of fabric for pocket
2 yards of SF101 interfacing
1/2 yard of fusible fleece
1 - 9" zipper
Coordinating thread.

Cutting:

For the exterior: 2 - 15" x 15" squares
For the lining 2 - 15" x 15" squares
For the pocket 1 - 10" x 16" rectangle
For the handles: 2 - 6" x 21" strips



*Illustrations not to scale

Step 1: Line your exterior pieces and pocket pieces with SF101 interfacing. Line your lining pieces with the fusible fleece. (You can also line your handle pieces with SF101 --this is optional)

Step 2: On your pocket piece, you will mark a line 1.5" (green), 1.75" (orange), and 2" (blue) from the top edge. You will also mark a line 1" (brown) from the left and right sides.

Step 3: Place your pocket piece 3.5" down from the top of your exterior piece and 2.5" from both the left and right sides. Sew along the exterior of the rectangle you just made. You will want to make sure your stitch length is a bit small for this part. Also make sure you back stitch.

Step 4: Now you are going to cut along the center line in your rectangle. Being careful not to go into your stitches. You will also snip a little triangle notch on either side.



Step 2



Step 3



Step 4

Step 5: Push your pocket through the hole you just made. This will take some patience to get everything to lie flat. Press

This is what the back looks like. You can see it's not as pretty, but that's okay you will not see this part!

Step 6: Now place your zipper - (Pull side up) and center it. You will want to either glue baste or pin into place.



Step 5



Step 6

Step 7: Now carefully stitch around your opening, very close to the edge. Securing the zipper into place.

Step 8: Fold up your pocket piece and align the bottom and top edges, so that it is right sides together. Pin into place and then you are going to stitch it closed. **You will only stitch around the pocket! Do not stitch into the exterior fabrics.**



Step 7



Step 8



Step 8



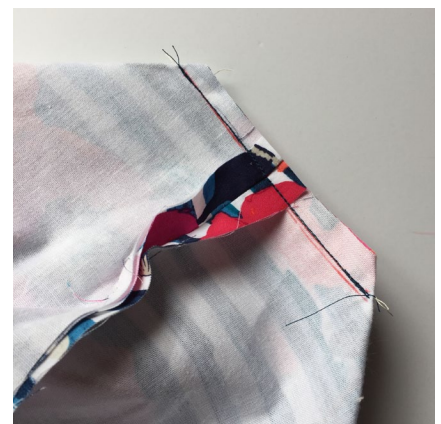
Step 9: Now place your two exterior pieces right sides together. Pin all the way around and then using a 5/8" seam allowance, stitch around the left, right and bottom sides of your bag.



Step 9



Step 10



Step 11

Step 10: Now it's time to make the boxed corners. Place your hand inside your bag and make a triangle in one of the bottom corners by matching up the side seam with the bottom seam. Pin into place. Mark 3" from either side and make a line. Then sew along that line. Be sure to back stitch. Do this to both sides of your exterior piece.

Step 11: Trim 1/4" from the seam line and then set your exterior piece aside.

Step 12: Now place your two lining pieces right sides together. Pin all around then using a 5/8" seam allowance, stitch around the left, right and bottom sides of your bag. **(Leave about a 3"- 5" opening at the bottom - this is where we will turn your bag right side out at the end)**

Step 13: Now it's time to make the boxed corners again like you did in step 10. Place your hand inside your bag and make a triangle in one of the bottom corners by matching up the side seam with the bottom seam. Mark 3" from either side and make a line. Then sew along that line. Do this to both sides of your lining piece.



Step 12



Step 13



Step 13



Step 14: The handles - Press your handles into fourths, then fold over again. Press. Stitch along both sides - staying close to the edge.



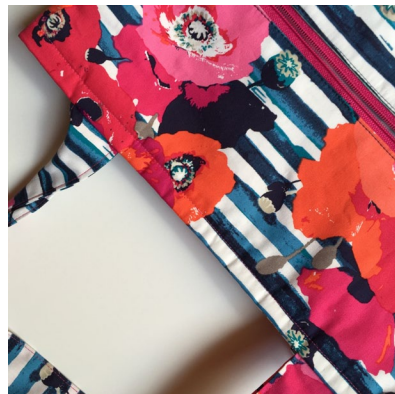
Step 15: Place your handles on the exterior of your bag. Place them 2” from the left and right seam. Sew them on with a 1/4” seam. Make sure you don’t twist your handles when you sew them on. Do this on both sides of your exterior piece.

Step 16: Place the exterior of your bag (Right side out) INSIDE the lining (Wrong side out) of your bag - make sure the handles are in the middle of the two pieces. Line up your side seams, and then pin all the way around. Sew a 5/8” seam all the way around the top bag.



Step 19: Now pull everything out through the opening of the bottom of your lining. Sew your lining shut by either hand stitching or a quick machine stitch. (I did a machine stitch) Then tuck your lining inside your bag and give it a good press around the top of your bag.

Step 20: Top stitch along the top of your bag (3/8”)



For more free patterns and tutorials visit: www.fortworthfabricstudio.blogspot.com