

Spring In Ambleside



Fort Worth Fabric Studio
Designed by: Lindsey Weight

Read all instructions before starting. All seam allowances are 1/4". Do not sell or distribute without owner's consent.

Fabric Requirements:

27 fat eighths (9" x 22") (will use remaining scraps for a scrappy binding)

3 yards of background fabric

4 yards for backing


Cutting

I have included a cutting guide for this pattern - see pages 5 - 7 for details.

From background fabric:

144 - 2" x 2" squares (A)

72 - 3.5" x 3.5" squares (B)

9 - 7 1/4" x 7 1/4" squares *cut in quarters diagonally (C) 

6 - 3" x 18.5" strips (F) Sashing

18 - 3" x 18.5" strips (G) Sashing

From Prints:

144 - 2" x 2" squares (A)

9 - 7 1/4" x 7 1/4" squares *cut in quarters diagonally(C)

18 - 6 7/8" x 6 7/8" squares *cut in half diagonally(D) 

9 - 6.5" x 6.5" squares (E)

16 - 3" x 3" squares (H) for the cornerstones

Block Construction:

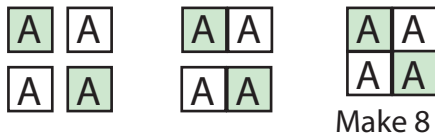
You will need the following for one block:

- 16 - 2" background squares (A)
- 16 - 2" various colored squares (A)
- 8 - 3.5" background squares (B)
- 1 - 7 1/4" background square - Cut into quarters diagonally (C)
- 1 - 7 1/4" color square - Cut into quarters diagonally (C)
- 2 - 6 7/8" color squares (D) - Cut in half diagonally (D)
- 1 - 6.5" color square (E)

Step 1:

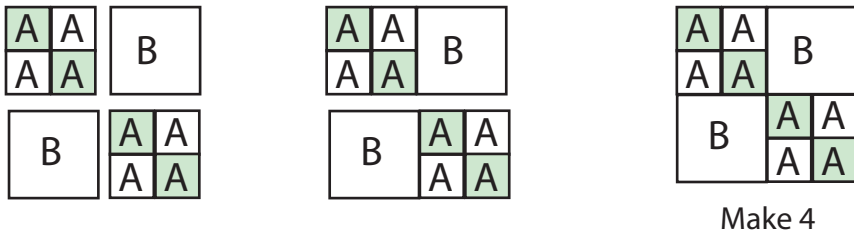
Making the four patches:

Take two background A's and two color A's and sew them into a four patch. Make eight.



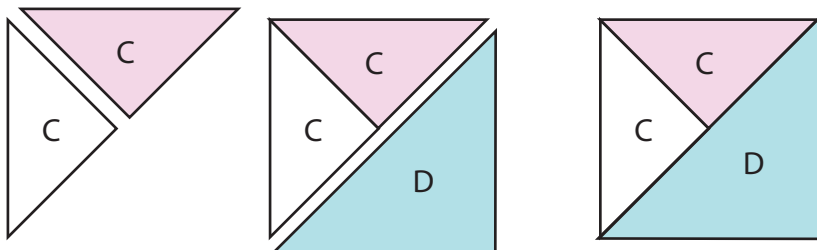
Step 2:

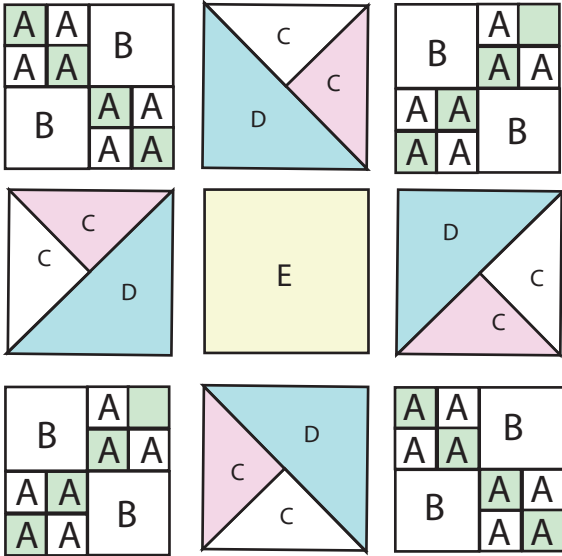
Take 2 - B squares, and 2 of the four patches you just made, and sew them together as shown



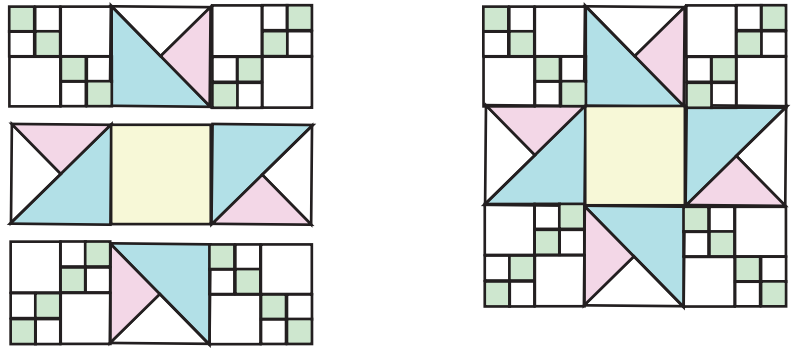
Step 3: Take 1 C background triangle, and 1 C color triangle and sew them together, making sure the color triangle is on the right.

Now take 1 D triangle and sew to the long side of your C unit. Make 4.





Step 4: Layout your block pieces as shown. Sew units together in rows of three, then sew the rows together. Press block. Block will measure **18.5" x 18.5"** **Make 9 blocks total.**



Step 5: Making the sashing strips:

Take 3 - G strips, and 2 - H squares, and sew them into a row as pictured in the diagram. Make four of these strips



Sashing Strip A

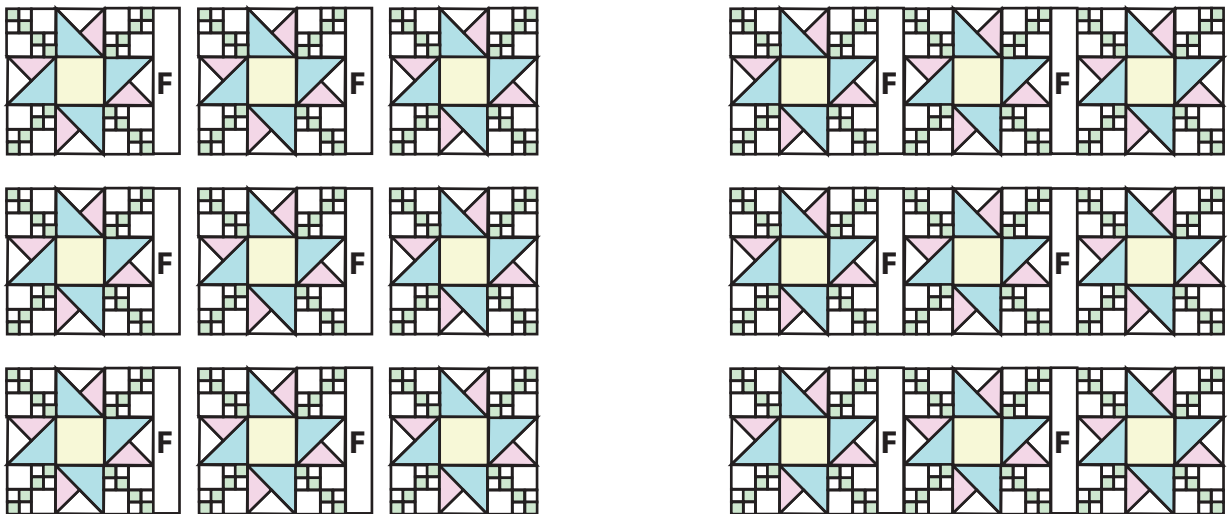
Make another sashing strip, but this time you will use 3 -G strips, and 4 - H squares. Make 2 of these strips.



Sashing Strip B

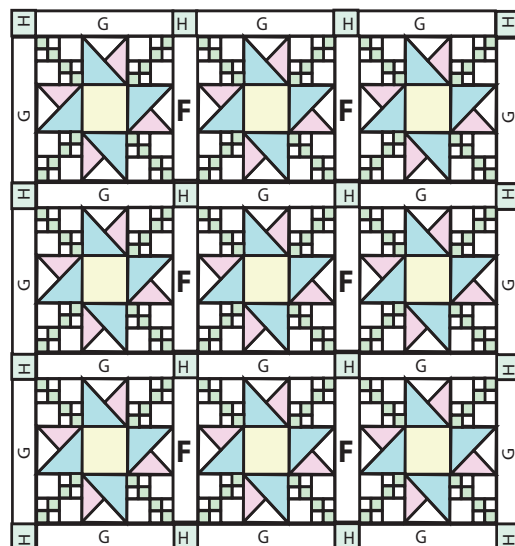
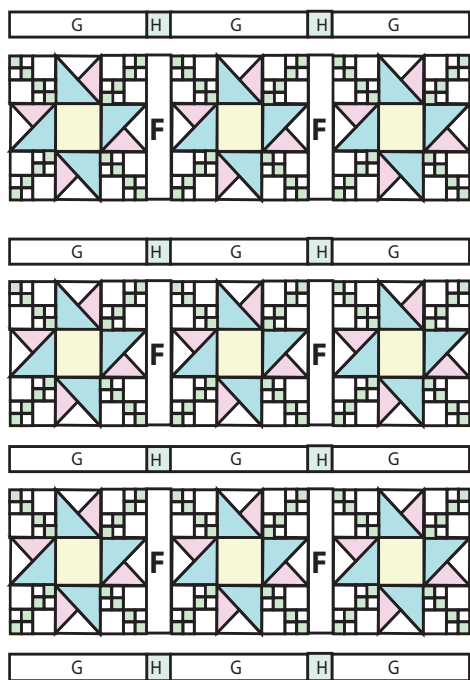
Step 6: Take your F strips, and sew one in between the blocks.

Step 7: Now sew your blocks into rows of three.



Step 8: Now you will add your sashing strips. Sew sashing strip A in between all the rows and on the top and bottom of the quilt top.

Sew sashing strip B onto the left and right sides of your quilt top.



You are now ready to baste, quilt and bind with your preferred methods.

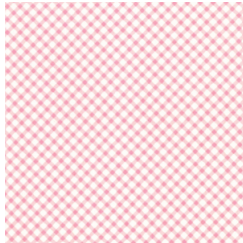
Cutting Guide

I am including this cutting guide, for those of you who would like to make the quilt exactly as pictured with the same fabrics. I first cut out all the C, D, and E pieces to each block and labeled them with which block number it was and put each block into a separate bag. I then cut out all of the 2" A pieces from all of the scraps and then added 16 various 2" squares to each bag. I then cut out all my background pieces and then added my background pieces to each bag. I found this to be the easiest for me and it helped me keep everything in the right order!

Block 1



C

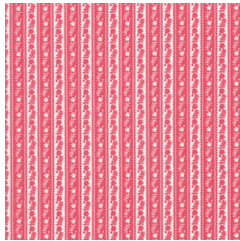


D (2)



E

Block 2



C

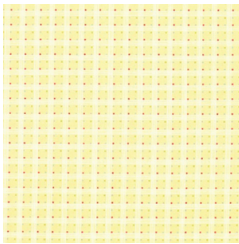


D (2)

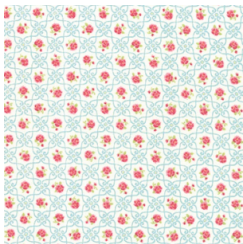


E

Block 3



C



D (2)

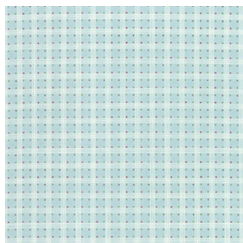


E

Block 4



C

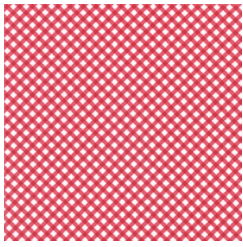


D (2)

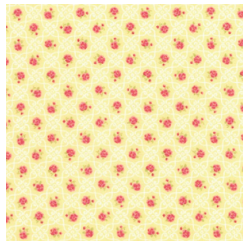


E

Block 5



C

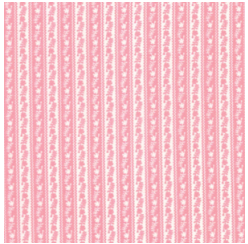


D (2)

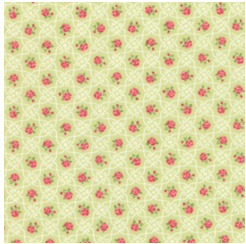


E

Block 6



C

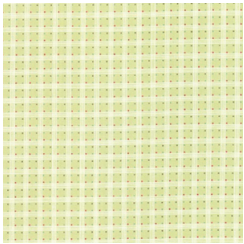


D (2)



E

Block 7



C

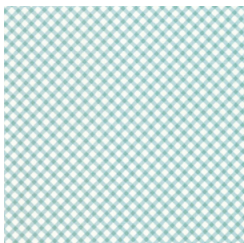


D (2)



E

Block 8



C



D (2)



E

Block 9



C



D (2)



E

